

Planting Area No. 05
Proposed Feature Planting Areas
 Proposed Feature Planting Areas to comprise specimen tree planting with flowering shrubs and low ground cover with specimen and accent planting forming visual interest and amenity to the proposed feature terrace garden.

Planting Area No. 06
Proposed Feature Planting Areas
 Proposed Feature Planting Areas to comprise ornamental specimen tree planting with flowering shrubs and low ground cover with specimen and accent planting forming visual interest and amenity to the proposed building / pedestrian access.

Legend

- Existing Mature Trees**
Existing Mature Trees to be Retained and Protected on Site in accordance with BS3837:2012 - 'Trees in Relation to Design, Demolition and Construction - Recommendations'. (Refer to Drawings LLD954 / 02 Tree Retention and Protection Plan and accompanying LLD954 Existing Tree Schedule.)
- Proposed Native Specimen Tree Planting**
12 - 14 cm girth size; 3.5m - 4.25m height; Standard (Heavy) Nursery Stock; (Trees to be long double staked). (Refer to Drawings LLD954 Detailed Planting Plans series and LLD954 Detailed Planting Schedule and Specification.)
- Proposed Ornamental Specimen Tree Planting**
14 - 16 cm girth size; 4.25 - 6.0m height; Standard (Extra Heavy) Nursery Stock; (Trees to be long double staked). (Refer to Drawings LLD954 Detailed Planting Plans series and LLD954 Detailed Planting Schedule and Specification.)
- Proposed Feature Specimen Shrubs**
Proposed Feature Specimen Shrub Planting (Refer to Drawings LLD954 Detailed Planting Plans series and LLD954 Detailed Planting Schedule and Specification.)
- Planting Areas**
Ground Cover, Flowering Shrub, Specimen and Accent Planting Areas to be a minimum of 300mm depth of subsoil overlain with a minimum of 450mm depth of Multi-purpose Topsoil to BS:3882:2015. Topsoil to be tested and certified by a Soil Scientist in accordance with the imposed topsoil specification.
- Proposed Mixed Native Species Hedgerow**
Proposed Mixed Native Species Hedgerow planting. Hedgerow planting to be 60-80cm height; 2 no. staggered rows set 400mm apart; planting to be at 400mm centres. (Refer to Drawings LLD954 Detailed Planting Plans series and LLD954 Detailed Planting Schedule and Specification.)
- Proposed Ornamental Species Hedgerow**
Proposed Ornamental Species Hedgerow planting. Hedgerow planting to be 60-80cm height; 2 no. staggered rows set 400mm apart; planting to be at 400mm centres. (Refer to Drawings LLD954 Detailed Planting Plans series and LLD954 Detailed Planting Schedule and Specification.)

Planting Areas / Mulching
 All proposed feature planting areas to be overlain with 75mm depth Ornamental Bark Mulch. Planting areas to be mulched with fine graded ornamental bark mulch; 5 - 35mm nominal particle size; BS4970:1987.

Tree Pit Tree Planting
 Tree Pits (Hard Landscape)

- Sizes: Standard (Heavy): 1000 mm x 1000 mm x 750 mm depth.

Tree Pits (Soft Landscape)

- Sizes: Standard (Heavy): planting pit excavation to be 150mm - 300 mm greater than size of rootball.
- Backfilling: Backfill to be gently compacted in layers of 150mm - 230mm depth ensuring tree remains upright.

Staking:

- Standard (Heavy) trees to be long double staked.
- 75 mm diameter timber stakes driven vertically into the ground to finish 300mm below base of pit;
- Stakes to be cut level at 1000mm height and braced with timber crossbar.

All staked trees:

- Ties: Adjustable ties.
- Tying: Secure tree firmly but not rigidly with a single tie centrally on brace for long double staking.


Detailed Planting Plans / Specification
 (Refer to Drawings LLD954 Detailed Planting Plans series and LLD954 Detailed Planting Schedule and Specification.)

Grass Seeded Areas
 Grass seeded areas to be minimum 300 mm depth subsoil overlain with a minimum of 150 mm depth of Multi-purpose Topsoil to BS:3882:2015. Topsoil to be tested and certified by a Soil Scientist in accordance with imported topsoil specification. Grass seed mix to be 'A19 (All purpose Landscaping)' to be supplied by Germinal or equal and approved.

Rev	Description	Date	Initials
01	Planning Issue	07.07.16	KM

Lizard Landscape Design

Lizard Landscape Design and Ecology
 34 South Street
 Tarring
 Worthing
 West Sussex
 BN14 7LH
 Tel. 01903 216033
 Email: lizard.landscape@btconnect.com

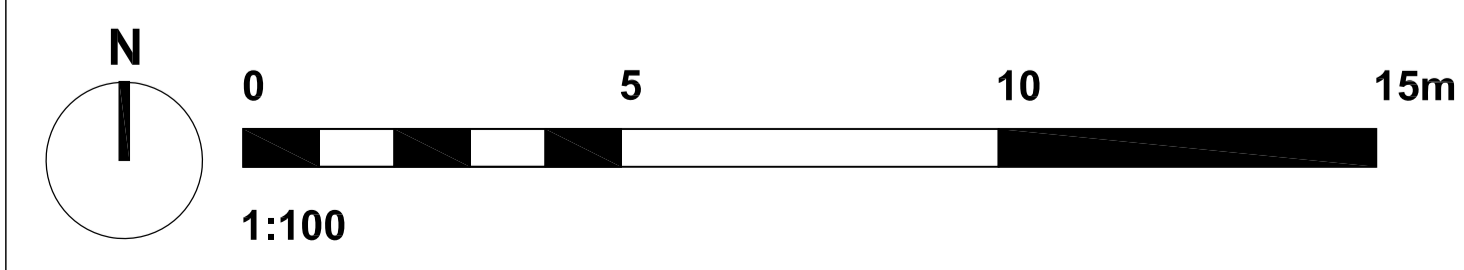
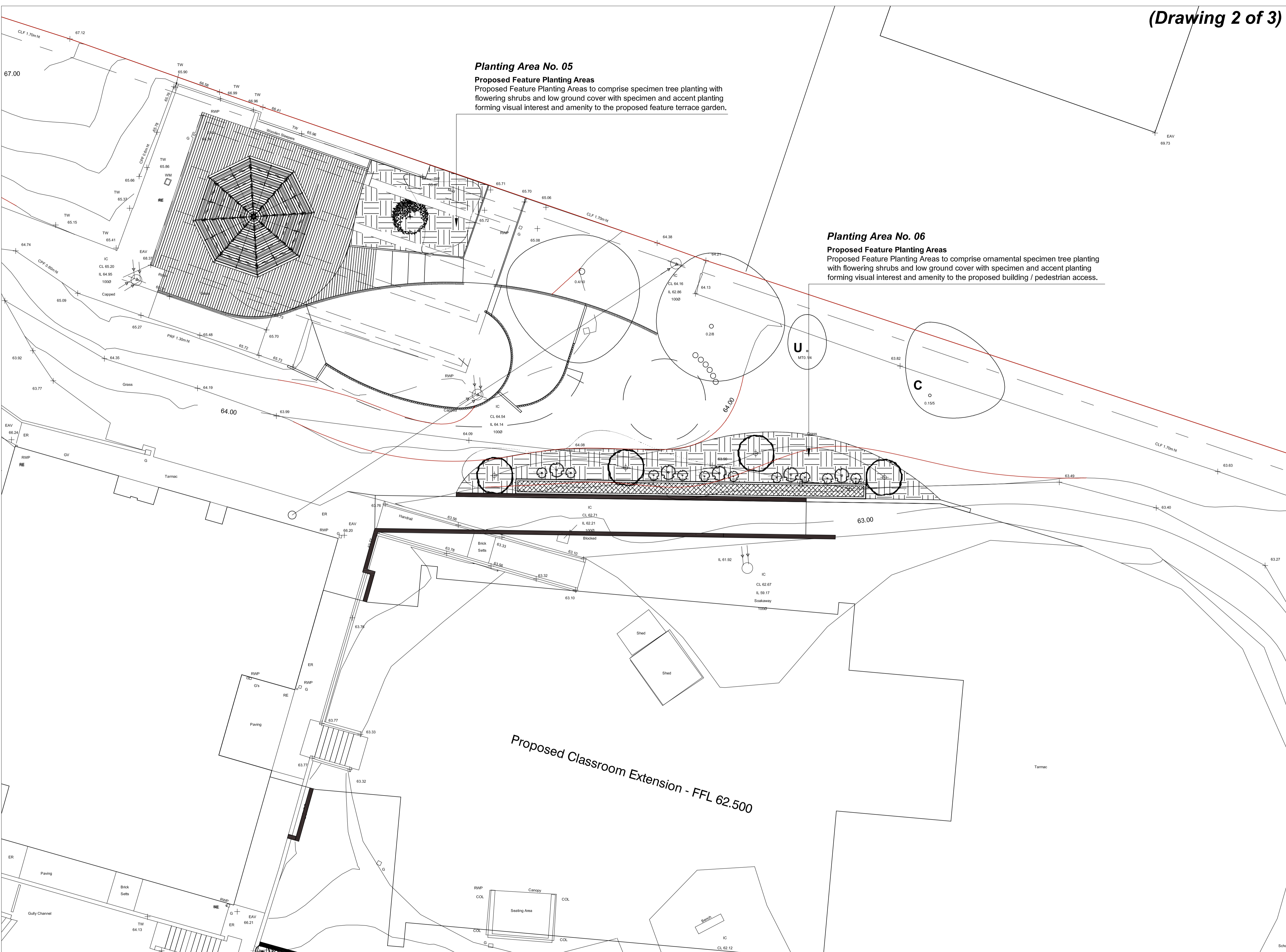


Project title
Meridian Primary School
 Peacehaven, East Sussex

Drawing title
Soft Landscape Layout
 (Drawing 2 of 3)

Scale	Drawn	Date
1:100@A1	KM	09.06.16
Approved		

Drawing No	Revision
LLD954 / 03 - 02	01
CAD Filename LLD954/ CAD Drawings	



Soft Landscape Layout

Meridian Community Primary School, Peacehaven